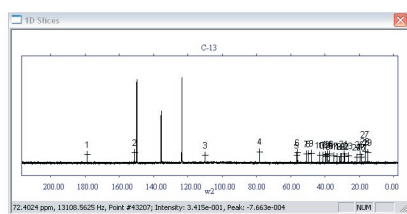


SpecManLite - Spectral Analysis

Tools to Speed Up the 1D Data Management & Spectral Analysis Process

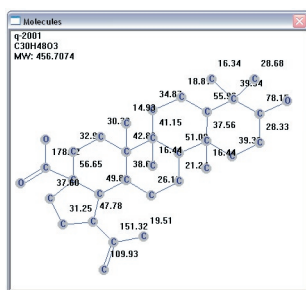
- Provides an interactive graphical analysis tool for scientists working with a variety of 1D spectroscopic data.
- Imports a variety of formats (Bruker, Varian, JEOL, NMRPipe, NUTS, Felix, JCAMP, Galactic, Triad, NMR-Compass, etc.) of processed spectrum files for concurrent display and analysis in multiple views. **NEW!** Multiple 1D Overlay.
- Enables tied expansions of multiple 1D spectra for comparison.
- Provides manual peak picking of singlets and multiplets with options to merge peaks, add peaks, delete peaks, and refine peaks.
- Performs automatic 1D peak picking and creates peak tables for editing, sorting, and saving of the results.



ID	Label	X Pt	X Value	Mult	Intensity
1	1	114.50	178.9221	u	+2.555e-002
2	2	159.99	151.3231	w	+3.033e-002

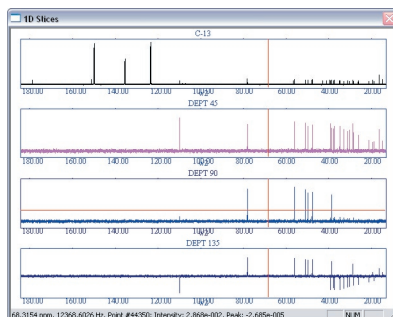
Automatic 1D Peak Picking with 1D Peak Table

- Exports complete or expanded regions of spectra in native vendor formats, as well as in gif, pdf, and postscript formats for display and analysis in web browsers.
- Provides tools for creating custom databases of 1D spectra, structures, peaks tables, and assignment tables for browsing, searching, and comparison with other data.



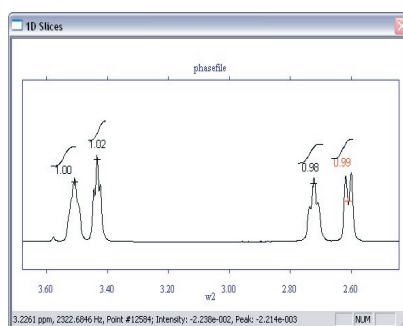
#	Atom	Chemical Shift Assigned	H-1
1	C	178.82	
2	C	151.32	
3	CH2	118.93	4.76
4	CH	78.15	3.43
5	C	56.45	
6	CH	55.96	0.81
7	CH	51.00	1.37
8	CH	47.78	1.76
9	C	42.98	3.51
10	C	41.15	
11	C	38.32	
12	CH2	28.54	0.97
13	CH2	38.32	1.65
14	CH	28.65	1.72
15	CH2	39.60	1.57
16	C	37.56	
17	CH2	34.87	1.37
18	CH	37.50	1.44

Display of Molecule with Assignment Table

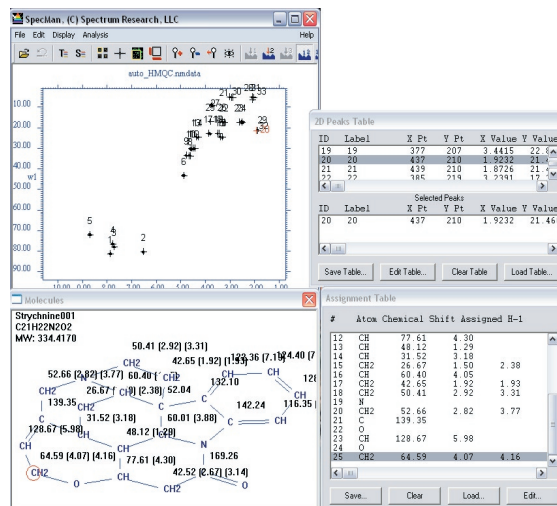


Analysis of Multiple Spectra in Tied Mode

- Enables manual 1D peak integration.
- Imports predicted spectra for comparison and assignment of experimental data.
- Annotates peaks with alphanumeric and greek letters.



1D Peak Integration of Proton Spectrum



Easy Manual Assignment with Point & Click of Chemical Shifts

Spectrum Research, LLC. also offers value-added Contract Research Services through its subsidiary, Spectrum Research Labs.

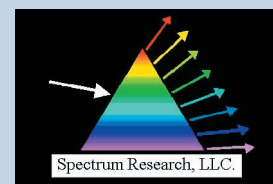
Spectrum Research Labs specializes in the NMR spectral data collection, processing, analysis, 2-D NMR structure elucidation (of natural products and organic compounds), and 3-D NMR structure determination (of proteins and DNA).

The Following Services Are Available:

1D, 2D, 3D, and nD NMR
Data Collection & Analysis of:
Natural Products
Organic Molecules
DNA
Peptides and Proteins

High-field 500 to 750 MHz
(CryoProbe available)

For more information, visit
www.specres.com/labs/company.asp



Spectrum Research, LLC.

505 South Rosa Road Suite 119
Madison, WI 53719

T: 608.233.4882
F: 608.233.1870

www.specres.com